



## Emsworth Sailing Club

# Members' Handbook

January 2016

# Emsworth Sailing Club - Handbook

## Table of Contents

Introduction from the Commodore.....	4
An abridged history of the Club.....	5
Facilities and Equipment for Members.....	6
Car Park.....	7
Clubhouse.....	7
<b>Ground Floor</b>	
Entrances.....	7
North Room.....	7
Cloakroom and disabled access WC.....	7
Inner lobby.....	7
Outer office.....	7
Office.....	7
Bars.....	8
Club Room.....	8
<b>First Floor</b>	
Ladies' cloakroom.....	8
Race office.....	8
Training and Committee Room.....	8
Upper Deck.....	8
Terrace.....	8
Slipways.....	9
Pontoons.....	9
Wash down points.....	9
Swimming Pool.....	9
Changing Rooms.....	9
Sail Store.....	9
Workshop.....	9
“Scran” Locker.....	9
House Store.....	9
Old Coastguard Cottage.....	10
Outboard and Oar Store.....	10
Mountbatten Dinghy Park.....	10
Trolley Marking.....	10
Foreshore Slip.....	10
Club Governance.....	11
Who's Who.....	11
Admiral.....	11
Trustees.....	11
Commodore.....	11
Vice Commodore.....	11
Rear Commodore (Sailing).....	11
Rear Commodore (House).....	11
Director of Training and RYA Principal.....	11
The Secretariat.....	11
Franchisees.....	11
Membership.....	12
Membership card.....	12
Door access.....	12
Cashless purchasing.....	12
Communication.....	12
Members Area.....	12
Dress.....	12
Social.....	13
Bar.....	13
Catering.....	13
Events.....	13
Picnics.....	13

## Emsworth Sailing Club - Handbook

Volunteering .....	13
Health and Safety .....	13
Dinghy Sailing .....	14
Juniors .....	14
Martlets .....	14
Race Coaching .....	14
Adult Dinghy.....	14
COW - Children on the Water .....	14
WOW – Women on the Water .....	14
Cruiser Sailing.....	14
Duties.....	15
Officer of the Day .....	15
Patrol Craft .....	15
Training.....	15
Equipment available for members use.....	15
Escape .....	15
RS Vision .....	15
Optimist Dinghies .....	15
Rowing Dinghies.....	15
Lawnmower .....	15
Pressure Washer.....	15
ESC Rules, Bye Laws, Health and Safety Policy and the ESC 10 Golden Rules... ..	16
.....	
<b>Appendix</b>	
Emsworth Harbour Racing Chart – Upper Harbour .....	17
Emsworth Harbour Racing Chart – Down Harbour .....	18
Ground Floor Plan .....	19
Upper Floor Plan .....	20

# Emsworth Sailing Club - Handbook

This handbook has been developed for all members, old and new, to help enhance and optimise your use of the Club and its facilities. Emsworth Sailing Club is constantly changing and evolving. Facilities and their uses change, methods of operation vary according to the members' needs and of course, people come and go. The handbook has been designed to be updated periodically and it is hoped that it will become a lasting and useful document.

Please check the web site for updates. If any member thinks there is anything missing from the handbook that should be included, please contact the secretaries.

## **Introduction by the Commodore**

Welcome to the Emsworth Sailing Club and I hope that you find this Handbook useful and informative. The Handbook guides you around the different facilities of the Club, introduces you to the many sailing and social opportunities and gives you a brief history of the Club. It also introduces you to some of the Rules and Bye-Laws which need to be read and understood so that everyone knows what to expect and what to do when they are on the Club premises.

Recent extensive developments of the Club now give us an extremely attractive and functional Clubhouse which can meet the needs of all members, both young and old, whether racing, cruising or just pottering. We are extremely fortunate to have these excellent facilities and catering in such beautiful surroundings and I urge everyone to help maintain it that way.

We are known as a very family-friendly club and it is our intention to continue to build on this enviable reputation. We have over 1600 members in total, including over 400 juniors, many of whom are doing exceptionally well in national and international regattas. We encourage them, and all other members, to use all the facilities that the Club has to offer, whether that be for sailing, socialising, swimming or enjoying probably some of the best food and hospitality in the harbour from our franchisees, Ollie and Eloise.

Let's all hope for fair winds, blue skies, great sailing and friendship in the years to come.

Brian Pickersgill - Commodore

# Emsworth Sailing Club - Handbook

## **An Abridged History of The Club by Jason Scott**

While this article has no intention whatsoever of being either definitive or original, more can be found in a fine treatise, written by Patrick Millen and with a foreword by Admiral of the Fleet Earl Mountbatten of Burma, available in the Club Office. Emsworth Sailing Club is blessed with an absorbing history and a prominent place in sailing in Chichester Harbour. The relevance of our heritage will not always be apparent to some, but it does place the Club into context and support the Commodore's point that the club has always evolved in the best interests of its current membership and been mindful of the need to sustain its place as a leading contributor to the well-being of the harbour as a whole.

Records of sailing for pleasure at Emsworth do not reach back that far, although records of bathing do. The name "Bath Road" reflects accurately the purpose of the current Club House, which was in fact first erected as a bathing house as part of a national boom at the start of the nineteenth century. Even then, the House had "furnaces, pipes and apparatus for a hot bath". Just as now.... A small bathing pool just off the Club was converted for bathing at the time from an old oyster pond. Unfortunately, as the century progressed, interest in middle class bathing diminished and in 1895, the Bathing House was sold on as a dwelling. Coincidentally, records of an interest in establishing a sailing club in Emsworth also reach back to 1895. Then, 7 prominent local individuals, including direct antecedents of current members, formed a club and ordered six early 'One-Design' boats to be built on the Isle of Wight. This valiant initial effort did not stand the test of time although a more resilient proposal followed. The first formal records of the current club are those reflecting the sale of the Bathing House, several outbuildings and a coastguard station (the current Junior Facilities) for the sum of £400 to a consortium of five gentlemen, constituting the first Managing Committee of the newly established Emsworth Sailing Club on November the first, 1919. Initial membership was limited to 500 and the Club burgee was designed by Mr G Yeo showing "Next the mast, the rose of Hampshire Red on white ground. Next the point, the Swallow of Sussex White on Blue ground" - the Swallow referred to is a Martlet.

Committee life then was very much as Committee life nowadays, with much time given over to deliberations on facilities, new members and finance. Today's terrace covers two of the three oyster ponds which came with the house. The first of these ponds was where the swimming pool exists today and the second, a rather smelly pit just south of the current ladies' changing rooms. The last oyster pond disappeared gradually into the mud in front of the Club. Early finances were not robust, as the committee struggled manfully to keep the Club afloat and make small, incremental and necessary improvements. Gradually but not without local acrimony, the Club managed to expand its footprint Westward to include the area covered by the changing rooms which was at the time overgrown with blackberry bushes, it seems. This area, bought as a car park did not keep pace with the growing appeal of the automobile and in 1935, Miss Jessie Wilson of "West View" on Bath Road indicated that she would be willing to sell the area of land which is now the current Club car park for £200. Unsurprisingly, the Club was hugely enthusiastic about the purchase but it appears that there was a short but entirely amicable delay in the final contractual exchange which allowed Miss Wilson to remove her crop of cabbages, entirely reasonably.

As far as further alterations go, the smelly pit South of the ladies' changing room was filled at some expense and numerous alterations were made to the House. While manifold, chief among these were the additions of improved quarters for the Club "Steward" and the Bridge and Mast. The current kitchen was added in 1937 and the current Club Bar took shape at around the same time. A 'sun room' facing South over the harbour came in 1963 and was extended to its size before the recent new extension in 1972. A mass of ramshackle sheds running between the terrace gate and the junior room were replaced in 1960 by the current brick block, originally meant to be over two floors. The Club slipways were improved over time, often with the help of other clubs, most notably our friends at Emsworth Slipper Sailing Club.

The Committee recognised the need for continual improvement as demand for food, drink and accommodation increased. In April 1921, members could but did not enjoy lunch at 3/- (15 pence) and dinner at 4/6 (22 and a half pence). Catering fortunes waxed and waned until the arrival of stalwart stewards Mr and Mrs Beard in 1965, when standards began their current upward trend. Bar takings have grown over the years too. In 1924, profits were just over £2 and 11 shillings (£2.55) for the year. But we need not fear too much. By 1939, takings had risen to £228; by 1946 £663 and by 1977, they were £18,406. Takings have been increasingly healthy over recent years...

Sailing needs have changed over the years too. Whereas now, we are used to private ownership of a wide variety of racing and social dinghies, things were very different when the Club began. Widely differing performance of available craft meant that competition left much to be desired. And so enthusiasts around the country would increasingly often agree to build small yachts of "One Design". Emsworth Sailing Club was no exception and, with early advice from Bembridge Sailing Club, six boats were ordered of the

## Emsworth Sailing Club - Handbook

"Sharpie" design in late 1919 at a cost of £64 each. Their delivery was fraught with difficulty and the boats were not commissioned until 1921. They were sold a year later for reasons which are unclear, although maintenance was expensive. While private ownership of craft grew, "One Design" craft remained the backbone of Club sailing until as recently as the end of 1962. Additionally, a Club Regatta has been held in every year, except the war years, since 1921. No formal instruction in sailing was available and people learned by trial and error. How things have changed!

Membership of the Club has changed in number over the years but it has always reflected the composition of the local community. While early links with the Brigade of Guards can be found, the membership list for 1923 contains an architect, a clergyman, two doctors and representatives from a range of local occupations. Of 74 members at the time, 38 were local, 17 came from London, 9 were "county" and 10 came from Bembridge. Annual subscriptions and debentures when needed have always been carefully husbanded to keep the Club on a solid financial footing. The Club has always enjoyed involved and involving leadership that has moved the club forward with the degree of sensitivity required by modern life. Of note, Lieutenant Commander Lord Louis Mountbatten Royal Navy, at the time living in Adsdean, was invited by his friend the Earl of Bessborough to become Commodore in 1931, declining at first because he feared he would have insufficient time to do the role justice. In the event, he played a characteristically thorough part until returning to the Fleet. The longest unbroken term as Commodore was served by Vice Admiral C B Curtis from 1937 to 1953. In recognition of his extraordinary service, the rank of Club Admiral was created and he held it from 1960 until his death in 1965. The Club's next Admiral was the now Admiral of the Fleet Earl Mountbatten of Burma who accepted the position in the Club's Silver Jubilee Year 1969 and again in 1979 for the Diamond Jubilee. Lord Mountbatten's second tenure as Admiral was of course brought to a tragic conclusion by his murder by the IRA in 1979. His contribution was recognised on 7 July 1990 when Countess Mountbatten unveiled the inscription on the plaque fixed to the blue bollard in the Mountbatten Boat Park. The inscription reads: "In memory of Admiral of the Fleet The Earl Mountbatten of Burma, Commodore of Emsworth Sailing Club 1931-1932, and Admiral of the Club 1969-1979). Our most recent Admiral, Nigel Pusinelli, made an immense contribution to the Club over his lifetime, as a keen and accomplished sailor and an expert and popular administrator. As just one example of his achievements, Nigel was a key member of the team of many which seized the initiative to secure financially and convert physically the hard access to the Mountbatten Boat Park, freeing up much needed space in the Bath Road car park. As many will be aware, Nigel passed away in 2010, at the age of 91. A reappointment of the position has not been made.

In researching this short and distilled note from the wise words of those better qualified than the author to comment, the Club has benefitted from the unstinting support of its Committee and membership over the years. The beauty of a club such as this is that each generation adds a little more in the best way it can within the context of the time. Younger members will recognise around them names of previous Flag Officers and Trophy Winners from the honours boards who continue to give much for the benefit of the Club as it approaches its Centenary. We hope the younger members will find this interaction stimulating and be encouraged to play their own role in the Club as it moves forward.

### **Present**

The Club's membership, of approximately 1600, encompasses people from all walks of life and includes children, competitive dinghy sailors, cruisers, and many people who simply enjoy messing about in boats on the beautiful and unspoiled waters of Chichester Harbour.

There is extensive parking for dinghies, and there are a number of Club moorings.

We are an RYA-recognised training establishment and Volvo RYA Champion Club providing training and race coaching for children.

We have close links with Emsworth Slipper Sailing Club across the Mill Pond and much of our dinghy racing is held jointly, with each Club sharing in race organisation. Annual inter-club cruiser and dinghy racing is well supported.

There are annual regattas for both juniors and the Club as a whole, as well as races and rallies for cruisers throughout the year.

### **Facilities and Equipment for Members**

Emsworth Sailing Club provides facilities for sailing and swimming.

The Club complex comprises a Clubhouse containing bars, function rooms, toilets, administration office, and race office; outbuildings for changing rooms, workshop, sail and outboard storage and a junior room. In addition, there is a large dinghy park for over 370 dinghies and an outdoor fresh water swimming pool which is heated from May until September. The south facing terrace is mostly used for preparation of boats prior to sailing. Seating and picnic tables are available.

Access to the water is via 3 slipways from the terrace and 3 from the beach by the dinghy park. There are also 2 pontoons where craft may be moored for short periods.

The club has 6 patrol boats, 2 rowing tenders, 2 Optimist dinghies, 3 Laser Bahias, one RS Vision and one displacement craft. The club has a number of moorings for members to rent.

# Emsworth Sailing Club - Handbook

## **Car Park**

The Club Car Park is situated 100 metres to the north of the Club. Members cars must display a Club sticker when parked in the car park. Spot checks are carried out occasionally. Additional stickers can be obtained from the office. Please remove club stickers from vehicles when sold.

During busy periods the car park can become very crowded. This will normally occur during Open Meetings, the Regatta or popular social events.

A number of day boats and cruisers are overwintered in the car park, and this restricts the number of parking spaces available during the winter months.

## **Clubhouse**

Opening times vary according to the time of year. The opening times can be found in the annual Programme and on the web site ([www.emsworthsc.org.uk](http://www.emsworthsc.org.uk)).

Access to the building is controlled by access card which is also your membership card. You will need to have your membership card available whenever you intend to enter the clubhouse.

## **Ground Floor**

### ***Entrances***

There are 2 entrances to the Clubhouse. Both of these doors are normally locked and can be opened using your access card. It is worth noting that you will not be able to open either door outside Club opening times. The first is indicated as (A) on the map. For security reasons this door should be closed at all times. Please ensure it closes properly behind you. In the entrance hall of the main entrance you will find the Visitors' Book. All visitors should be signed in here. Each visitor can be signed in a maximum 6 times in one year or a maximum of twice in a 7 day period. The benefit of signing your guest in is that they can purchase their own food and drink. .

There is a door (B) to the west of the clubhouse from the terrace which opens into the family wet bar. This door is also opened with your card. It is often held open during warm or busy times but you should always be prepared to use your card to open it. The Log Book for dinghy billet holders is kept in the Wet Bar. Billet holders must log 8 uses a year to keep their billet

### ***North Room (C)***

The North Room (C) contains notice boards for the dinghy and cruiser section notices, junior section, items for sale and wanted.

This room has many functions. It is used as a television room, meeting room, food servery and games room.

Access is from the Club Bar or north entrance hall.

Children may freely use this room when it is not being used for a specific purpose.

### ***Male Cloakroom and ground floor unisex toilet (D)***

The male cloakroom is accessed from the entrance lobby. There are hooks for hanging coats here. A single unisex toilet is available opposite the coat hooks(D).

### ***Inner lobby***

This is the passage between the north entrance and the remainder of the clubhouse. Here you will find the stairs to the first floor and pigeon holes where messages may be left for collection by other members. The outer office is off the inner lobby.

The outer office (E1) contains a notice board for administrative notices, a PC for members' use and convenience, a list of members' addresses and telephone numbers, policy and management documents and billet (dinghy spaces) and mooring information. There is also a first aid kit and a booking form/diary for club boat hire.

### ***Office (E2)***

Access to the office is from the outer office. The office is manned from 0900 to 1300 daily except 25<sup>th</sup>, 26<sup>th</sup> December and 1<sup>st</sup> January.

The Secretaries can be contacted by telephone:- 01243 372850

or email :- [secretary@emsworthsc.org.uk](mailto:secretary@emsworthsc.org.uk). Do contact them with queries. They are very well informed and friendly!

# Emsworth Sailing Club - Handbook

## ***Club Room (F)***

This is the largest room in the Club and is used for Club functions, dining, special events (eg talks, art/film shows), parties and for members to relax and enjoy the wonderful south facing view. It has audio visual equipment and a library corner where members can borrow or sit to read books. The room is L shaped and leads around to a Family Lounge Area abutting the Club Bar and the Wet Bar.

## ***Club Bar (G)***

Access to the Club Bar (F) is from the inner lobby and the main south facing Family Lounge (T). It is reserved for those aged 15 and over. It is fully licensed and stocks an extensive range of beers, wines and spirits at competitive prices. Food may be ordered and eaten in the Club Bar or Family Lounge or as a more formal meal in the dining area.

## ***Wet Bar (H)***

Accessed via the main Club room and from outside via the terrace, the wet bar can be used by sailors wearing wet sailing clothes. The weather station is located here together with a pair of binoculars. The coffee machine is positioned by the bar and dispenses hot drinks. This area is often used for signing on and off during open meetings and regattas. There are noticeboards for racing information in the entrance leading from the terrace. The Log Book for dinghy billet holders to register their use is also kept in this bar.

Both bars are open throughout the year at the times published in the Programme. Food is generally available during bar hours until 30 minutes before closing or 2100 in the evening. Seasonal restrictions apply, so please check during the winter and off peak months. The Franchisee and bar can be contacted on 01243 373065.or olliechef@aol.com

## **First Floor**

### ***Ladies' cloakroom (I)***

### ***Race Office (J)***

Here you will find all the equipment for running Club races. This is also where patrol boat equipment bags are stored and also where you will find the Club VHF radios. Please do not disturb the race team when they are here unless it is relevant to their task.

### ***Training and Committee Room (K)***

This room serves as a training room, meeting/committee room as required.

### ***Upper Deck (L)***

Members of all ages may use the Upper Deck area. However, while racing is taking place an area of the Deck is reserved for the Race Officer and his assistants.(L) This area will be clearly delineated and should not be crossed or obstructed at any time while racing is being conducted. Members are asked to adhere to any requests by the Race Officer when using the Deck while racing is taking place. The remainder of the area is large enough to be used as a drinks and relaxation area and excellent lookout point over the harbour. There are picnic tables for members use and members may eat their own picnics here. Access is either from the top of the stairs opposite the Ladies' Cloakroom or by the external stairs from the Terrace. Please note the door from inside is a fire door and should not be obstructed in any way.

## **Terrace**

The terrace is a busy place when the tide is in. This is where dinghies and patrol boats are prepared for taking to the water and washed after returning, where cruiser tenders are loaded and unloaded, where drinks and food are taken on sunny days, where marquees are pitched for Summer Balls and where fireworks are watched in November. Members may eat their own picnics at the picnic tables by the pool, at the waters' edge away from the slipways, at the picnic tables on the Upper Deck and in the Wet Bar, but all rubbish must be taken home. No alcoholic drinks may be brought to the club and only food purchased from the Franchisee may be eaten on the terrace adjoining the clubhouse. There are a limited number of spaces on the terrace for tenders, inflatable dinghies, canoes, windsurfers and Optimists. These spaces are rented out on an annual basis. The two Club rowing tender, Club Optimist, Bahia and Vision dinghies can be used by members.



# Emsworth Sailing Club - Handbook

Please note. Dogs (unless embarking or disembarking) and bicycles are not allowed on the terrace. Dinghies should be removed from the terrace after sailing. Trolleys should be name-tagged.

## ***Slipways***

There are 3 slipways from the terrace. There are south and east facing concrete slips adjacent to the clubhouse and a smaller wooden slip adjacent to the western pontoon.

The main concrete slips are used for the majority of launching and the south facing wooden slip is designed for small dinghies such as Optimists and is mostly used by the younger sailors and Kayaks.

## ***Pontoons***

There are two pontoons for mooring located to the south of the terrace. Principally, these are for use by dinghies, dayboats, and the Club's safety craft. However they can be used for larger craft for short periods. The pontoons are only accessible for approximately 2 ½ hours either side of high water and there is rarely more than 1.2m of water alongside at high tide.

## ***Wash down points***

There are two wash down points on the terrace. The main point is on the south wall of the changing room block and the other is on the SE corner of the pool enclosure. The latter is again used mostly by the younger sailors. All our water is metered so please do not use more water than necessary and make sure that the taps are turned off and hoses stowed when you have finished.

## **Swimming Pool**

It is heated and open from the end of April until the beginning of October. Check the Programme for exact dates.

There are many rules regarding safety and the use of the pool. The principal rules are:

- The use of the pool is restricted to Club members and temporary members under Rule 12.
- Solo swimming is not advisable and is restricted to members 16 years or older and capable of swimming 100 metres unaided who have signed the solo swimming declaration.
- All members using the pool,( including juniors aged 15 and above) or those supervising other swimmers, must have attended and passed the St John's Ambulance Resuscitation Class, the Club Resuscitation Class, or be the holder of a professional qualification or an equivalent certificate such as a first aid certificate.

Please check the rules and by-laws before using the pool.

## ***Changing Rooms***

The changing rooms provide separate male and female changing, shower and toilet facilities including toilet facilities for the disabled. There are also some lockers for storing valuables. These lockers require you to provide your own small padlock. The entrance doors are locked at all times and require a 4 digit code to be entered into the lock. This code is on display in the outer office and should not be divulged to non-members. The code is changed regularly for security reasons.

## ***Sail Store***

Members may use this shed for storage of sails and rigs. The shed is to the north of the swimming pool. The entrance door to the shed is secured by keycode. The code is the same as the changing rooms.

## ***Workshop***

This is where various racing marks and ground tackle are stored. Also the Club mower (see Dinghy Park) and other equipment for maintaining your billet. Minor maintenance can be undertaken here in the dry with the permission of the secretary. The workshop is to the west of the sail store. Access is via a keypad and a key is provided in all rescue boat equipment bags.

## ***“Scran” Locker***

The “Scran” Locker is a store where most lost property ends up. Any “Scran” that is left here is auctioned off in November. Remember if it has your name on it you are more likely to get it back.

## ***“House” Store***

The “House” store is a store where the House Committee store chairs, tables etc. Above the House Store is the Junior Room .

# Emsworth Sailing Club - Handbook

## **Old Coastguard Cottage**

### ***Outboard and Oar Store***

Outboards and oars may be stored in the ground floor of the Old Coastguard Cottage. A space will be allocated on payment of the appropriate fee. The key may be obtained from the secretaries. A key is given to those who have an allocated space.

## **Mountbatten Dinghy Park**

There are spaces (billets) for members dinghies. Billets are rented on an annual basis. To retain your billet for the following season you are required to launch your dinghy a minimum of 8 times per year and record the dates in the logbook located in the Wet Bar. You are also responsible for keeping the grass/weeds down around your billet. Tools are available for maintaining your billet, and are kept in the workshop. All masts must be lowered during the winter from 1st November to 1<sup>st</sup> March each year. Also you are advised to tie your boat down to prevent damage during high winds and because the dinghy park can flood during very high tides. Loose halyards should be tied back to avoid disturbing our neighbours

### ***Trolley Marking***

All dinghy trolleys used at the club should be marked with the boat type, name or sail number and the name of the owner on a tag which is available from the office. This also acts a safety feature and helps identify if a members' boat has not returned home.

### ***Foreshore Slip***

There are 3 ramps to the beach south of the dinghy park. Please be aware of people using the public footpath along the foreshore between the dinghy park and beach when launching and recovering. Do not leave your dinghy or trolley obstructing the footpath and take care with flapping sails and booms.

# Emsworth Sailing Club - Handbook

## **Club Governance**

Emsworth Sailing Club is predominantly managed by volunteers.

We have 2 paid secretaries, who run the day to day business of the Club and a bookkeeper. The bar and catering facilities are managed by a resident franchisee. A General Committee undertakes overall responsibility for the management of the Club. It is made up of the 4 Flag Officers and 9 ordinary members. There are two general meetings during the year which all members are encouraged to attend. The Financial General Meeting is in the Spring and the Annual General Meeting is in the Autumn.

There are four sub-committees; House, Sailing, Estates and Finance. Other committees may be formed for specific purposes. The majority of the committees sit once a month, usually on a Tuesday evening.

Flag Officers are elected annually and may stand for re-election each year. Committee members are elected for a period of 3 years and may stand for re-election at the end of their term. Elections take place at the AGM in the Autumn.

## ***Who's Who***

### **Admiral**

Admiral is an honorary life position awarded to a member for outstanding service:

### **Trustees**

Three Ordinary or Life members are appointed as and when required by the General Committee to act as Trustees for all Club property.

### **Commodore**

The Commodore is the principal Club representative and oversees the Club management. The Commodore chairs the General and Finance Committees

### **Vice Commodore**

The Vice Commodore is the Commodore's principal aid. The Vice Commodore acts in the Commodore's absence and is also responsible for chairing the Estates Committee.

### **Rear Commodore (Sailing)**

This is the member in overall command of all things on the water. The RC(S) chairs the Sailing Committee.

### **Rear Commodore (House)**

The holder of this position is responsible for all social functions at the Club and the liaison with the franchisee for the catering . The RC(H) chairs the House Committee.

### **Director of Training and RYA Principal**

Responsible for all training matters and liaison with the RYA.

### **The Secretariat**

The Secretaries should be your first point of contact for any queries or problems. If they cannot help you, they will advise you who to contact. The Club office is open from 0900 to 1300 every day except for Christmas Day, Boxing Day, New Year's Day and Wednesdays all year.

### **Franchisees**

The franchisees are contracted to provide bar, catering and other facilities to the Club. They are an independent business and not employed by the Club. The bar staff and waiting staff are all employed by the franchisee. To contact the franchisee to book a table or discuss a function, please call 01243 373065 during bar hours.

# Emsworth Sailing Club - Handbook

## **Membership**

Membership is by annual subscription. Applicants should be proposed and seconded by two members who have known the applicant(s) for two years or more. When vacancies arise the applicant(s) will be invited to an interview at the Club. The application is considered by the General Committee who vote on acceptance or rejection of the applicant. If successful, the applicants will be granted membership on receipt of the entrance and annual fee. The first year of membership is probationary and full membership will be confirmed by the General Committee upon satisfactory completion.

Temporary membership is available for periods of 1 week for house guests and there is a fee for adults and children

## **Membership card**

Your membership card identifies you as a member of Emsworth Sailing Club and is issued to all members over the age of 14. Cards for children between the age of 10 and 14 are available on request. Children under the age of 10 may not hold a card.

## **Door access**

Your membership card acts as a key to enter various doors around the club. Each door which can be unlocked with a card will have a reader with 3 coloured lights (red, amber and green). Hold your card close to this reader and a bleep will be heard which indicates that the lock has been released. Doors currently controlled by your card are the front door, terrace door and the door at the top of the internal stairs for access from the Upper Deck.

## **Cashless purchasing**

You can place credit on your card which can be spent across the bar. Credit can be topped up over the bar by cash or card. This means you do not have to bring cash or cards to the club and risk losing them whilst sailing or swimming etc. Each purchase will be accompanied by a receipt showing your remaining balance. A pre-paid membership card used at the bar entitles you to a discount on the price of alcoholic and non-alcoholic drinks.

## **Communication**

The preferred method of communication with the membership is by email.

Information is posted on the club web site ([www.emsworthsc.org.uk](http://www.emsworthsc.org.uk)). An E-newsletter is produced regularly throughout the year.

The secretaries can be contacted during office hours

by email: - [secretary@emsworthsc.org.uk](mailto:secretary@emsworthsc.org.uk)

by phone:- 01243 372850.

The franchisees can be contacted during bar opening hours

by email:- [olliechef@aol.com](mailto:olliechef@aol.com)

by phone:- 01243 373065.

The Race Officer may be contacted on 07774 551473 from 1 hour before the start of ESC races.

## **Members Area**

In addition to the basic details for each member - contact, subscription rate and billet details - we now keep records of door access cards, sail training qualification, the duty rota, winch users, race officer qualifications, powerboat qualifications, dinghy instructor qualifications, pool resuscitation course, expiry dates - the list goes on and on ...

The new, simple to use and highly secure data system is called **Members Area**. The members' on-line part of Members Area can be accessed from any computer with an internet connection and a browser. For more details please refer to the Club website.

## **Dress**

Members are expected to be suitably dressed when in the Clubhouse. Wet sailing clothes may be worn in the Wet Bar and in the upstairs training room when undergoing training. In these circumstances access should be via the external stairs. No swimwear may be worn in the Clubhouse.

# Emsworth Sailing Club - Handbook

## **Social**

Each year there is a full and comprehensive series of social events.

### **Bar**

The bar opening varies according to the season. Opening times can be found on the website and in the programme.

The bar provides beer, wine, spirits and soft drinks at competitive prices. The range of drinks available is comparable to local pubs. There is usually a selection of real ales and a good selection of wines sold by the bottle or glass.

### **Catering**

The franchisees provide bar snacks and more substantial menus for consumption in the dining area or outside (weather permitting).

There are formal and informal functions during the year which are often accompanied by a set menu meal.

These can be found in the Club calendar, the Club website and the social noticeboard in the dining area.

Also during the year there will be a number of themed evenings to suit all tastes.

You may bring your own food for consumption at the Club, but it must be eaten at the picnic tables situated by the pool, on the Upper Deck or by the water's edge. Picnics can be eaten in the Wet Bar in inclement weather but only food purchased from the Franchisee may be eaten on the terrace adjacent to the Clubhouse or in the main body of the Club. No alcoholic drinks may be brought to the club.

### **Events**

The House Committee arranges a wide range of events during the year. There are talks and lectures, celebratory dinners and Balls, prize givings, sailing socials for all ages, charity fundraisers and visits to places of interest. These functions are published in the programme, on the notice boards and notified by email and newsletter.

If you would like to propose an event or get involved with the planning and preparing, please contact RC House via the secretaries.

### **Picnics**

Members are permitted to picnic at the picnic tables near the swimming pool, on the Upper Deck, at the waters' edge away from the slipways and in the Wet Bar. Only food purchased from the Franchisee may be consumed on the terrace adjacent to the Club. Alcoholic drinks are not to be brought to the Club as part of a picnic. All rubbish and packaging should be taken home when leaving the Club.

### **Volunteering**

Your skills and time are very valuable to the Club. The maintenance and upkeep of the premises and assets are mostly carried out by members volunteering. This enables the Club to keep membership fees low. Please contact the secretaries with any time or skill you are able to offer.

Working Parties are held at the beginning and end of the season to carry out the multitude of labouring jobs needed around the Club. A wide range of jobs are carried out and all members are encouraged to join in. These mornings are very sociable and jobs are carried out by all age groups and fitness levels. Working parties are rewarded with a free snack lunch and a pint of beer.

### **Health and Safety**

See the policy on the Club website

# Emsworth Sailing Club - Handbook

## **Dinghy Sailing**

Emsworth Sailing Club caters for all levels of sailors, from dinghies to cruisers. The Club is an RYA Training Centre for dinghies and powerboats and a Volvo Champion Club.

### ***Juniors***

The junior section enjoys many and varied activities both on and off the water. There are many social events including a camping weekend at Cobnor, Junior Race Week and a Junior Regatta.

### ***Martlets***

“Martlets” is the name of the training scheme for juniors. It is open to all juniors who, at the start of the season, are in school year 2 or above. External, paid, instructors are used and there is a charge made for these courses. The training is based on the RYA syllabus - with qualified RYA instructors, and participants are eligible for RYA certificates at the end of the course.

Martlets courses start in the safer environment of the Mill Pond and as skills increase, move to the more open waters of the harbour.

### ***Race coaching***

The Club is a Volvo RYA Champion Club and as such the Club has an undertaking to develop junior dinghy racing. The Club also provides the framework for developing racing skills leading to competing in local and national fleets and applying for RYA zone squads. There are coached training sessions for Optimist, RS Tera and RS Feva sailors throughout the year.

### ***Adult dinghy***

There is a full racing programme throughout the year comprising individual cup races, series races, inter club competition, Open Meetings and a Regatta.

There are also many cruising opportunities for dinghy sailors. Emsworth is ideally suited to exploring Chichester Harbour and further afield.

### ***WOW – Women on the Water***

Women on Water is a Club initiative to provide women of all ages with the opportunity to get out on the water, whatever their sailing ability and with the confidence of knowing that there is a patrol boat available to help should they get into difficulties. WOW is run in conjunction with Emsworth Slipper Sailing Club on the other side of the Mill Pond.

### ***COW- Children on Water***

COW Week is an opportunity for Juniors of all ages and abilities to learn the essential skills needed to sail safely and confidently, whilst having fun and meeting other members of the Club. It's a family event in which the whole family can take part and contribute in many ways, from baking cakes for children's teas to manning safety boats, sailing with less confident children, and helping ashore or with the planning of the event.

During COW Week members explore the harbour, have picnics on Fowley Island, play rigging and knotting races, sail in all types of boats and take part in the Townsend Cup Seamanship Race.

## **Cruiser Sailing**

Cruiser members own and sail a wide range of boats, moored in the harbour or further afield.

The summer cruiser programme includes rallies to destinations on the Solent, France and Poole. Members cruise in company and meet for a meal in the evening, often at another sailing club. Two keenly contested cruiser races are organised jointly with Emsworth Slipper SC. The races are for a single Club fleet with handicaps. For members seeking a more active racing programme, Chichester Cruiser Racing Association welcomes cruiser racers from all the harbour sailing clubs.

Winter season activities include talks from members and guest speakers, Club evenings and dinners and the Volana Casket competition, for “the most enterprising cruise of any one season”

# Emsworth Sailing Club - Handbook

## **Duties**

All sailing members are expected to do a minimum of one duty each year. However, this is not a maximum. Many members do several duties which include race office, patrol craft, or on shore such as work parties for general clearing of the site.. Your duty will be slotted into the calendar if you do not specify on 'Dutyman' which date you would like. The Dutyman system is available from the Club website.

### ***Officer of the Day***

The OOD is responsible for managing a race or series of races. This includes setting the course(s), starting and finishing the race(s) and time keeping, calculating and producing the results. The OOD is also responsible for the safety of the event, including ensuring adequate safety cover for the conditions. The "Office" is either the Bridge Race Office on the first floor or can be aboard the Club launch, Escort, for deep water starts. The OOD will be aided by one or more Assistant OODs. The Assistant OOD requires no formal training or experience.

### ***Patrol craft***

There are 7 patrol craft: one diesel displacement launch, Escort, three Rigid Inflatable Boats (RIBs), Escimo, Escaliber and Francesca, and three small launches, Escargot, Fresco and Escape. All are crewed by 2 persons. The coxswain must hold a minimum of RYA Powerboat level 2 and preferably Safety Boat qualifications.

### **Training**

The Club provides training for all duties and courses for RYA qualifications. These courses are usually provided free where they enable you to undertake more demanding duties.

## **Equipment available for members' use.**

The following equipment is available for members' use, under the terms and conditions stated. Please treat all Club equipment as yours and return it in the condition in which you would expect to find it.

### ***Escape***

The tiller-steered orange Commando is available for members who must be approved by the Sailing Committee to take crew, equipment and provisions to and from craft on swinging moorings. An RYA Powerboat 2 qualification must be held by the user. The kill-cord must be used at all time with no exceptions.. Escape (or any other patrol craft) must not be left unattended whilst afloat and must be returned to their position on the terrace immediately after use. The keys are kept in the grab bag and fuel in the fuel store.

### ***RS Vision and Bahia***

Performance sailing dinghy, an RS Vision and 3 Bahias are stored under a cover on the terrace. Bookings are available through the secretaries. A £15 fee is payable for each use.

### ***Optimist Dinghies***

Swallows and Amazons are available for members' use. Bookings are available through the secretaries. A £10 fee is payable for each use.

### ***Rowing Dinghies***

There are 2 rowing dinghies available for members' use; these are called Margaret and Sylvia. Please see Bye-Law 4A3 for restrictions.

### ***Lawn mower***

This is kept in the Workshop. It is available for members to use to keep their billets tidy and the grass cut.

### ***Pressure washer***

Kept in the Workshop

# Emsworth Sailing Club - Handbook

## ***Emsworth Sailing Club Rules, Bye-Laws and Health and Safety Policy***

All this is available on the Club website. Please familiarize yourself with them.

Please note: If any discrepancy exists, the Bye-Laws take precedence over the Members' Handbook.

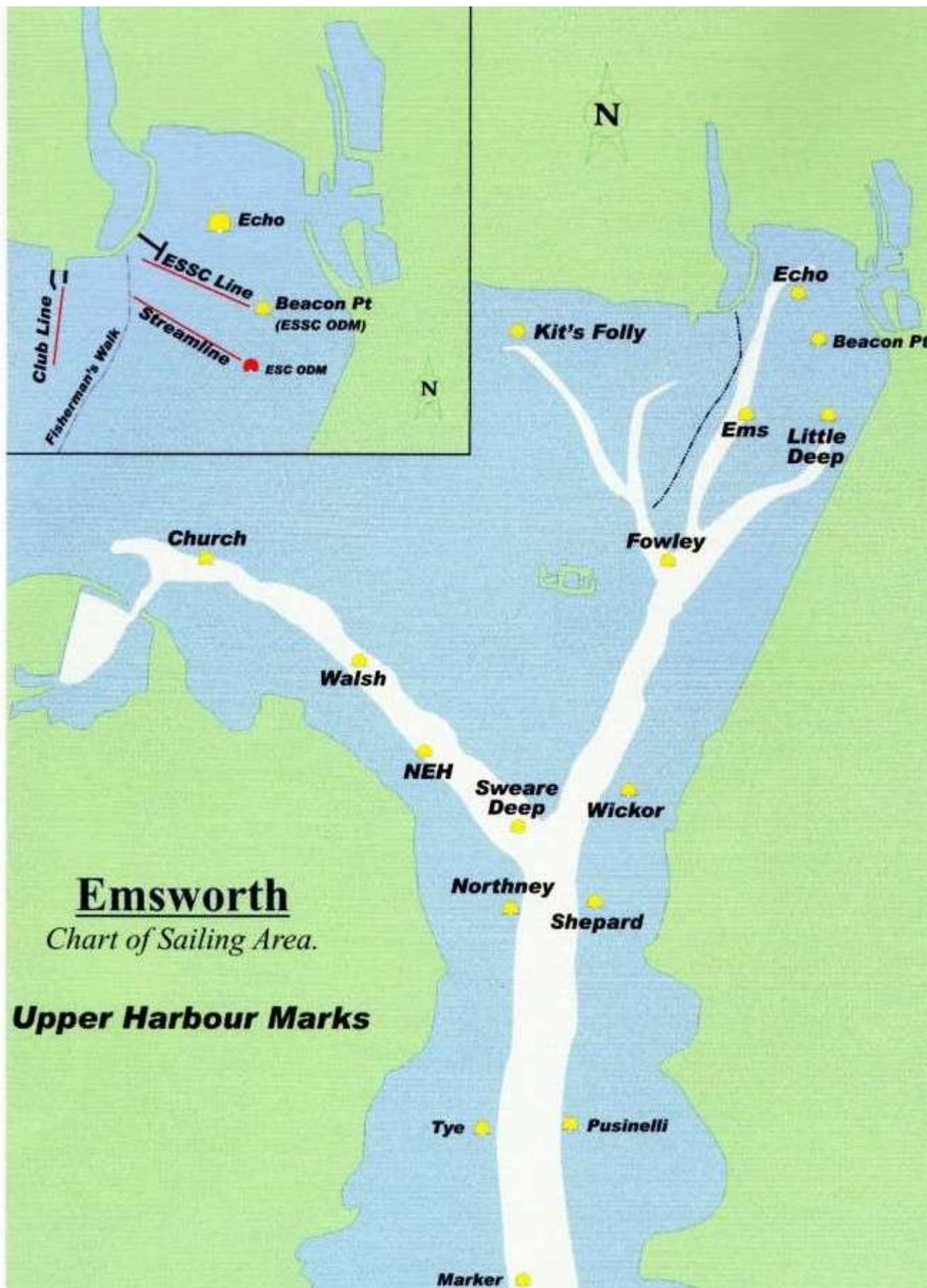
The Club has rules and bye-laws which we would encourage you to read, for your and other's safety and for full enjoyment of the Club. These serve as a small reminder of what we already know, but experience indicates that it is worth reiterating some Club rules and bye-laws at the start of each season. We call them the 10 'Golden Rules'!

- Please do not allow your children to run on the premises. There are too many trolleys, tools and too much equipment in a small area for this to be safe.
- You must sign in your guests in the Visitors Book, which is kept in the bar or entrance hall. Guests can only visit twice in any week and 6 times in any year. Temporary membership is available for your house guests (which would also allow them the use of the swimming pool) at a cost £25 for adults and £15 for children under 18 years, per week.
- Dogs are not allowed on the premises.
- The Club bar is a child free zone at all times for children under the age of 14. Please make your children aware of this. Children can be served in the wet bar. ESC Membership Cards are available for children 11yrs and over.
- Children under 5yrs are not allowed in the Club House after 19:30hrs.
- No glasses or food allowed in the pool area.
- If you have been sitting outside, please always return glasses and plates to the bar.
- No bikes or wheeled toys are allowed on the terrace. They can be locked to the bike racks provided on the north side of the Club.
- No smoking or vaping is allowed on the Club premises, except at the far end of the 2 pontoons.
- Don't forget that in order to keep your billet you must sail and sign your boat out at least 8 times during each season. The billet log is kept in the wet bar.



# Emsworth Sailing Club - Handbook

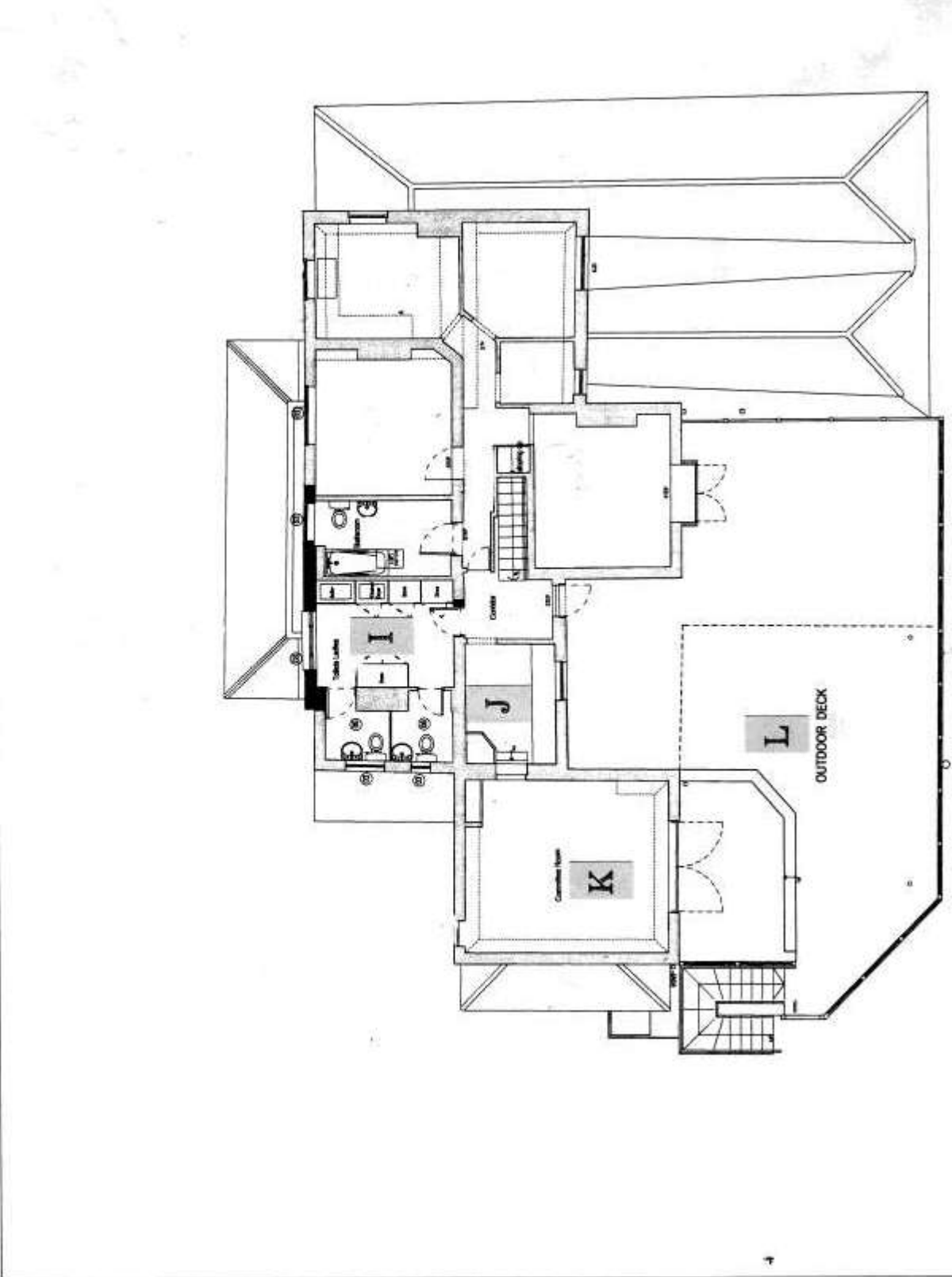
## Emsworth Harbour Racing Chart – Upper Harbour Marks







**UPPER FLOOR PLAN**



# Emsworth Sailing Club - Handbook

# Emsworth Sailing Club - Handbook